



Soil Stabilization Spreaders Open-top Models



Model SSOT 80

High volumes. Low dust.

The versatile Stoltz Site Spreader is all you'll ever need for spreading these cementitious and pozzalonic materials:

- Portland cement
- Quicklime
- Hydrated lime
- Bentonite
- Cement kiln dust
- Flyash

Application rates to 30 lb per sq.yd. at 2 mph with a level 8, 10 or 12 ft wide pattern.

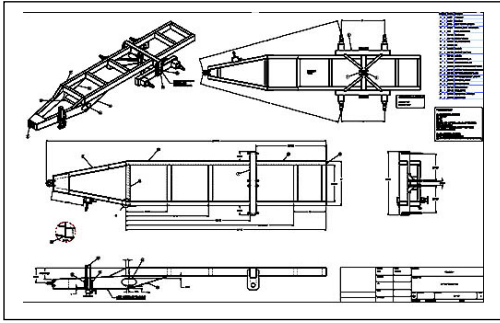
Standard Features:

- 30-inch wide PTO drag chain
- Hydraulic spreading auger
- Hydraulic or manual rear metering gate
- 9-inch by 8-foot spreading auger
- Dust curtains around auger to keep material contained while spreading.
- Clevis hitch or pintle hitch
- Walking beam suspension
- Break-away auger assembly

Available options:

- Auxiliary engine for towing without a tractor.
- Spray system for dust suppression.
- Grate to hold bulk bags while filling

Greater reliability, longer life, faster payback



Engineered for maximum strength

With computer aided design, tolerances are tighter and parts and assembly are more consistent.



Built with the best components

We purchase the best parts and steel, and assemble them according to the engineering drawings.



Tested for precision spread patterns

In addition to a long lasting spreader, you want an accurate and reliable spreader.



Model SSOT 1516

Specification:	Model SSOT 80	Model SSOT 1516
Maximum Rated Load (tons)	8	15
Hopper Capacity (cu.ft)	177	225
Hopper Capacity (cy)	6.5	8.3
Hopper Length	10'	16'
Hopper Width	78"	74"
Hopper Depth	45"	37"
Overall Length	18'	24'
Overall Width (w/o Auger)	94"	104"
Overall Height	87"	78"
Standard Tire Size	19.5Lx16.1, 8 ply	21.5Lx16.1, 14 ply
Wheel Track (centerline)	75"	80"
Approx. Empty Weight	4,500	5,700



C.U. Stoltzfus Mfg., Inc.
Morgantown, PA USA 19543
800-843-8731

www.cementspreaders.com